



TYPHOON 2SP

Ø100, Ø125, Ø150-160, Ø200



TYPHOON
overview video



Axial inline mixed-flow fans are designed for supply-exhaust ventilation systems of residential, public and industrial buildings.

Fan's body, a central part with the motor, impeller and implemented terminal box, is detachable and allows easy maintenance. It is fastened to the nozzle parts with hose clamps.

Two-speed fans. The speed is controlled with cable switching inside the terminal box or with a traditional switch button (supplied with the device).

Asymmetric design of the terminal box ensures easy mains cable connection.

Two-speed single-phase ball-bearing motor with an extended service life.

Cutout overheating protection and automatic reset.

Horizontal and vertical installation.

Fastening to the mounting surface is done with screws.



TYPHOON 2SP features

Ø100, Ø125, Ø150-160, Ø200



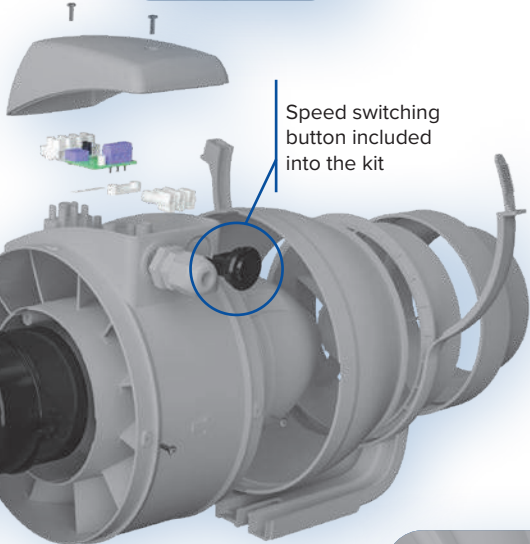
Click-lock flexible hose clamps allow fast and easy maintenance of the fan's body



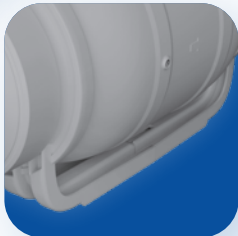
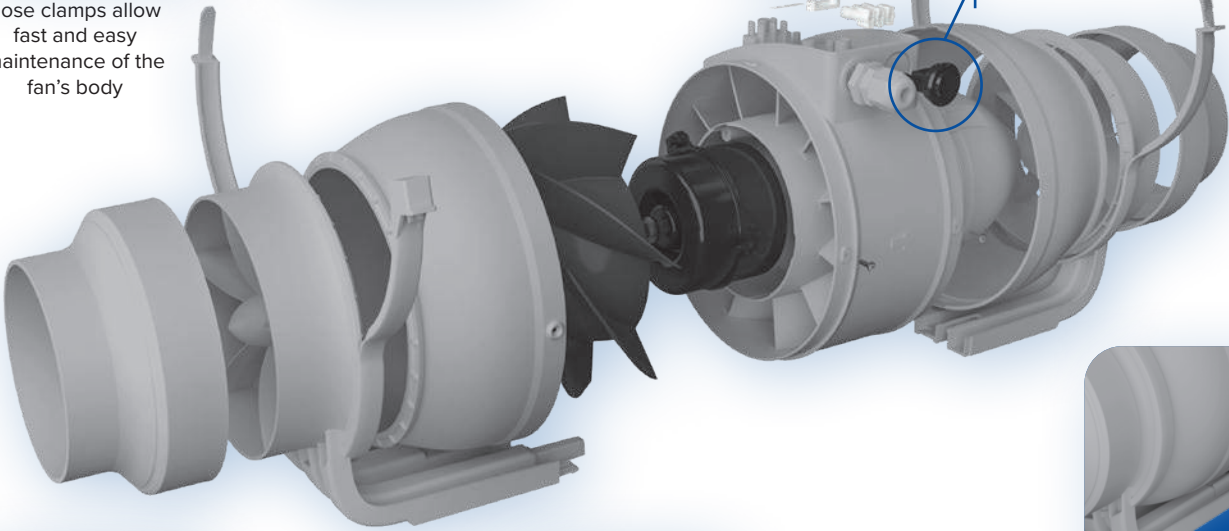
2-speed ball-bearing motor



Solid terminal box with a cable gland



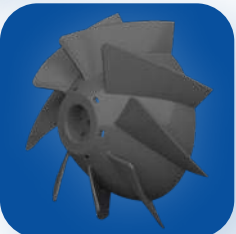
Speed switching button included into the kit



Easy fastening

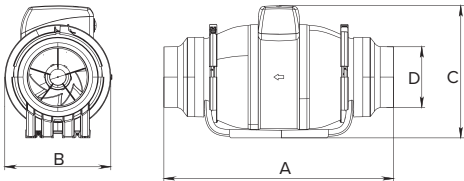


Size adapters for easy switching to the other diameter



Mixed-type impeller shows better aerodynamic characteristics

Overall dimensions

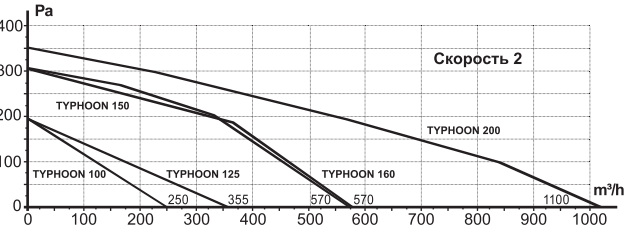
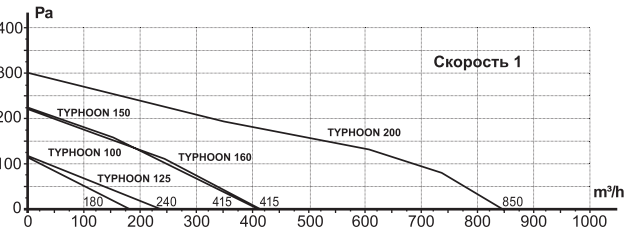


Item code	A	B	C	D
TYPHOON 100 2SP	371	173	216	99
TYPHOON 125 2SP	291	173	216	124
TYPHOON 150 2SP	323	190	238	149
TYPHOON 160 2SP	340	190	238	159
TYPHOON 200 2SP	376	250	267	198,5

Technical specifications

Specifications		Hz	TYPHOON 2SP				
			100	125	150	160	200
Power consumption, W	L2	50	25	29	50	50	105
	L1	50	23	25	42	42	75
Capacity, m ³ /h	L2	50	250	355	570	570	1100
	L1	50	180	240	415	415	850
Pressure, Pa	L2	50	190	190	305	305	350
	L1	50	110	110	225	225	300
Noise level, dB(A)	L2	50	40	39	49	49	58
	L1	50	31	30	40	40	50
Current consumption, A	L2	50	0,11	0,13	0,22	0,22	0,51
	L1	50	0,10	0,11	0,18	0,18	0,42
Rotation frequency, RPM	L2	50	2500	2450	2600	2600	2600
	L1	50	1850	1800	2000	2000	2250

Capacity diagram



Compatible with

Plastic channel system



page 120

TYPHOON 200 2SP
in a new design





TYPHOON 2SP

Ø250, Ø315



Inline mixed-flow fans are designed for supply-exhaust ventilation systems of residential, public and industrial buildings.

Two-speed fans. The speed is controlled with cable switching inside the terminal box or with a traditional switch button (supplied with the device).

Two-speed single-phase ball-bearing motor with an extended service life.

Cutout overheating protection and automatic reset.

Horizontal and vertical installation.

Fastening to the mounting surface is done with screws.

TYPHOON 2SP 250, 315 are equipped with metal hose clamps.

Ball-bearing motor

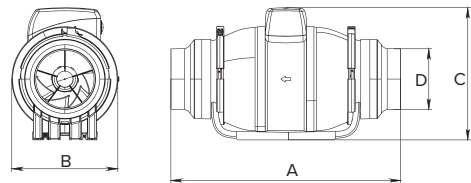
Cutout overheating protection

2 speeds

Warranty

Ingress protection rating for electrical equipment

Overall dimensions

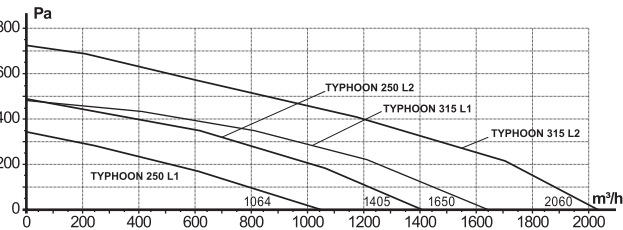


Item code	A	B	C	D
TYPHOON 2SP 250	383	310	261	247
TYPHOON 2SP 315	446	386	325	312

Technical specifications

Specifications		Hz	TYPHOON 2SP	
			250	315
Power consumption, W	L2	50	225	285
	L1	50	165	215
Capacity, m3/h	L2	50	1405	2060
	L1	50	1064	1650
Pressure, Pa	L2	50	488	715
	L1	50	371	480
Noise level, dB(A)	L2	50	66	69
	L1	50	58	61
Current consumption, A	L2	50	1,2	1,24
	L1	50	0,75	0,93
Rotation frequency, RPM	L2	50	2450	2350
	L1	50	1850	1900

Capacity diagram



Compatible with

Metal channel system

page 140



Ообенноти
TYPHOON 2SP

Ø250
Ø315



Two-speed single-phase ball-bearing motor

Click-click metal fasteners

Mixed-type impeller shows better aerodynamic characteristics

Fan holder

Possible mounting in public premises



Possible mounting in public showers